

TAKTVOLL®

SY02 STANDARD DIGITAL VIDEO COLPOSCOPE

Designed specifically to meet the demands of efficient cervical clinic applications, this device features excellent image quality and a streamlined operational workflow tailored for clinical use. It comprehensively enhances your work efficiency and application experience.

PRODUCT FEATURE

Adopting the high-definition SONY ExviewHAD CCD module with a horizontal resolution ≥ 480 TVL, ensuring clear images and true colors, the device is equipped with fast automatic focusing and continuous zoom functions. This meets the requirement for continuous dynamic observation from an overall to detailed perspective throughout the examination process.

Featuring 60 long-life ring-shaped multi-point medical-grade LED light sources, the device ensures a more uniform distribution of light and a broader range of brightness adjustment. This guarantees the true color representation of observed images.

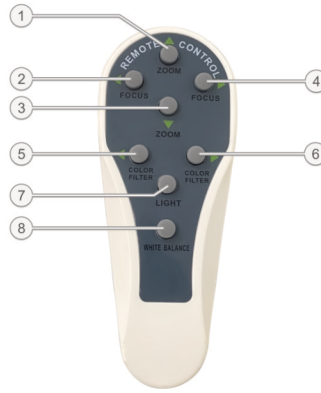
Featuring an upright stand and an adjustable gimbal structure, it allows flexible and effortless positioning at the optimal angle, providing convenient observation for medical professionals.

Introducing the electronic green filter function, which effectively identifies the detailed layers of epithelial tissue and the presentation of capillaries, meeting the clinical needs for observing, examining, and diagnosing early cancerous changes.



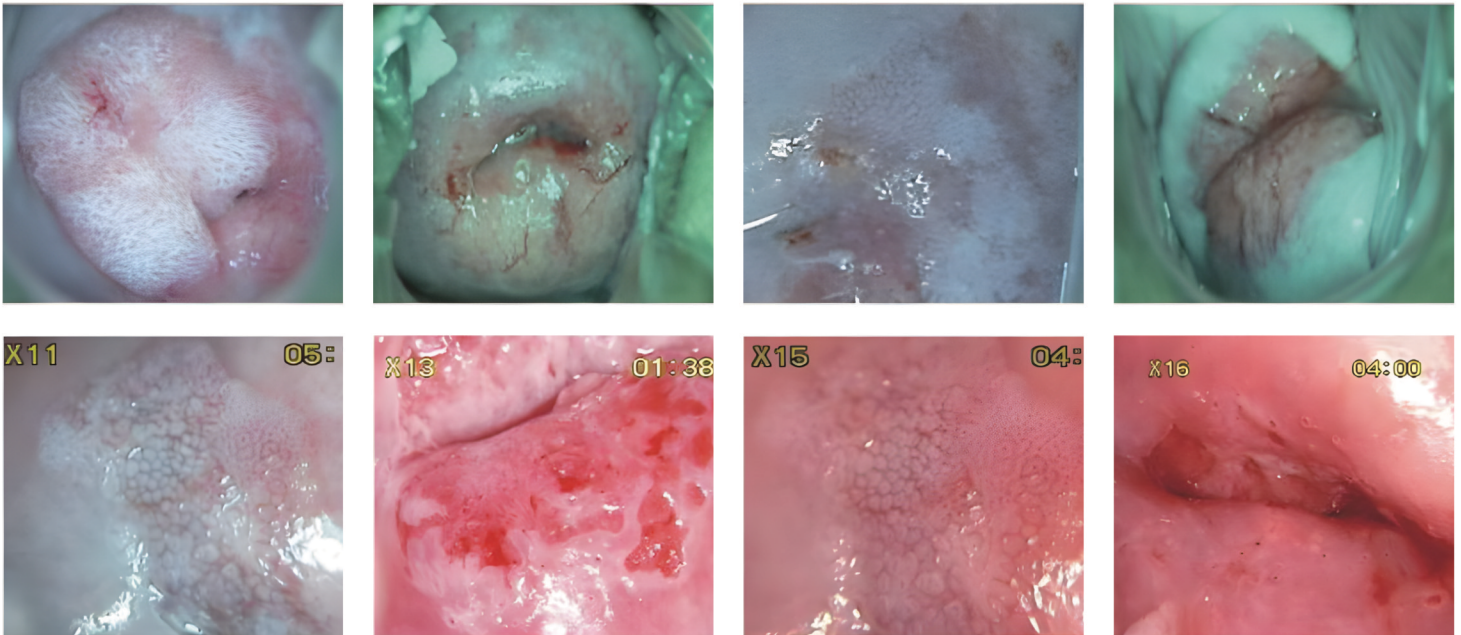
Multi-function Remote Control

1. Zoom in
2. Focus Adjustment
3. Zoom out
4. Focus Adjustment
5. Color filter
6. Color filter
7. Light Adjustment
8. White Balance



Electronic Green Filter Function Controlled by Multi-function Buttons

The professionally designed electronic green filter function employs a three-level green light control technology, better meeting the demands of professional vascular enhancement imaging in clinical applications. Simultaneously, it ensures that images remain unaffected by light loss, facilitating seamless color printing and output.



Professional Diagnostic Analysis and Printing of Graphic Reports

- Offer RCI for cervical precancerous lesion images and SWEDE quantitative assessment and analysis tool, allowing for comparative analysis of patients' medical history data from different examination periods.
- Offering functionality for annotating pathological areas on examination images and marking biopsy site locations.
- Multi-printing report template, allowing users to selectively print content and choose graphic and textual printing formats, supporting LEEP surgical record editing and report printing.

